

Hello sailors!

We invite you to participate in the additional race "ORWBornholm Blue Ribbon Race" outside the regatta, covering the route from Dom to Nexø, competing for the blue ribbon on four routes to Nexø. The condition for participating in the "Blue Race" is to register for the VII ORWBornholm 2025 regatta. Each participant wishing to take part should do so by filling out the form on the regatta's website, entering in the comments: "I register for the Blue-Ribbon Race" and indicating the appropriate route letter.

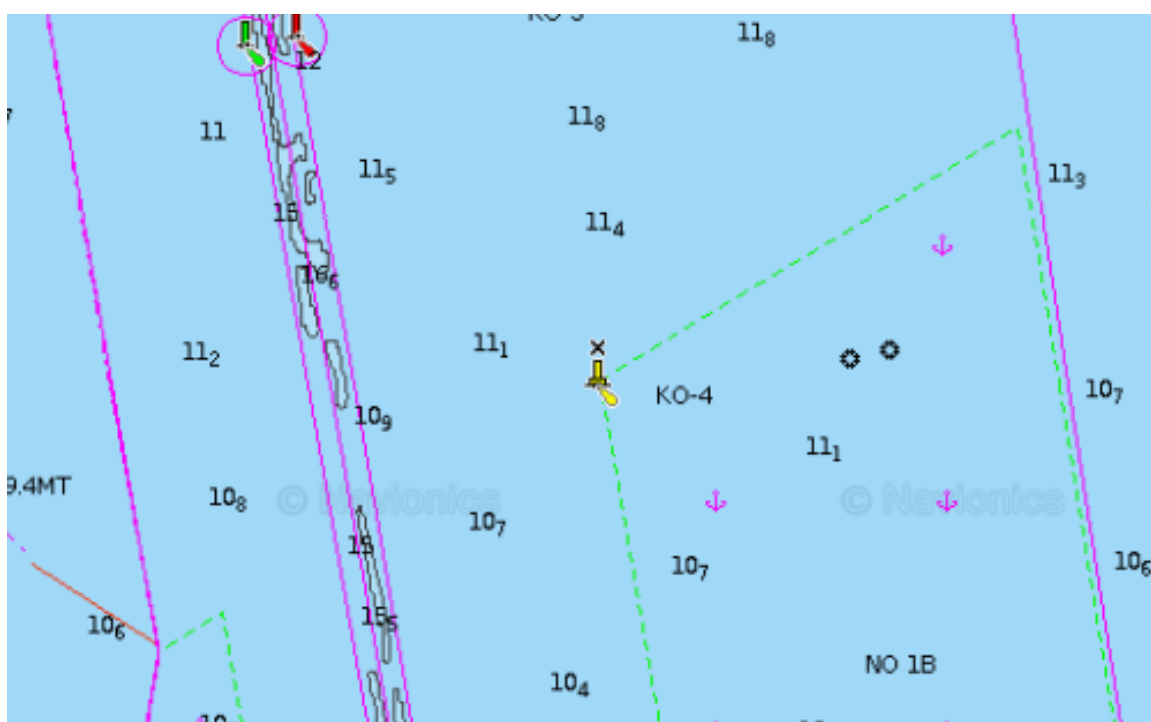
Timing

The starting line for each route will open on June 14, 2025, at 00:00. Each registered yacht, upon crossing the starting line, is required to press the MOB button on the plotter, recording the time and position of the starting mark in memory. Additionally, they are obligated to take a screenshot of the plotter screen and send it to the organizer via WhatsApp in the regatta group. The same procedure applies to crossing the finish line. The finish line will be closed on June 18 at 24:00.

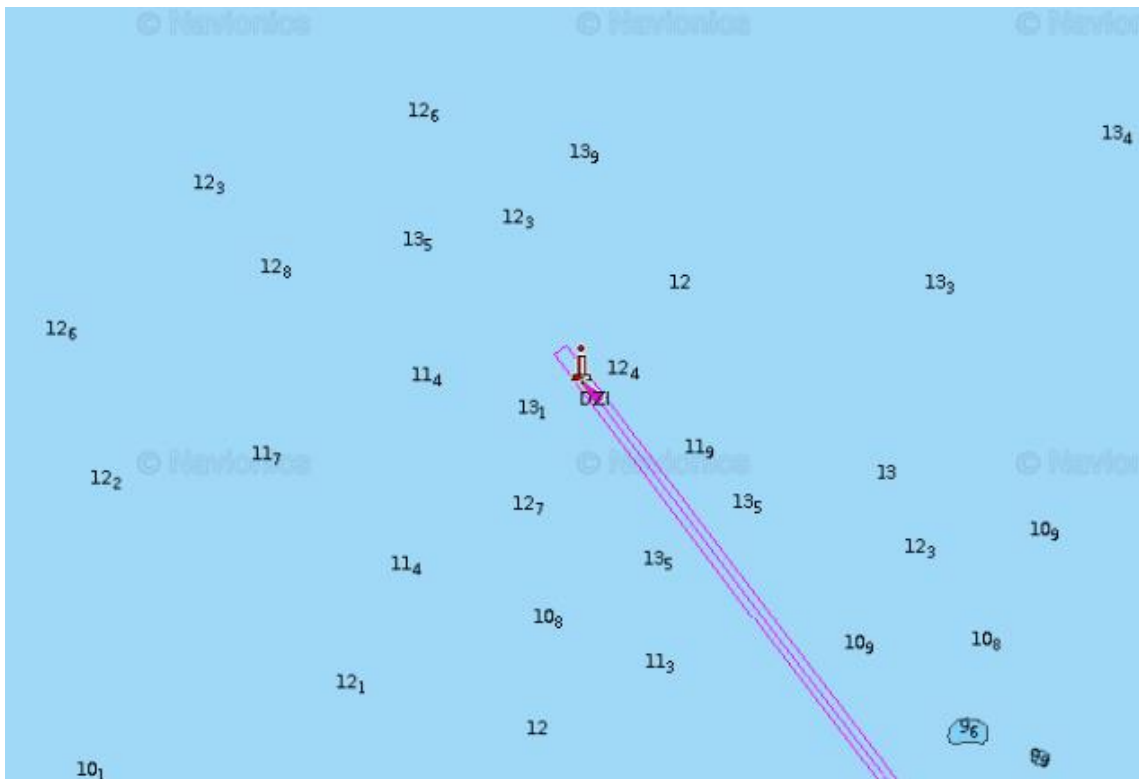
Routes

We anticipate four routes:

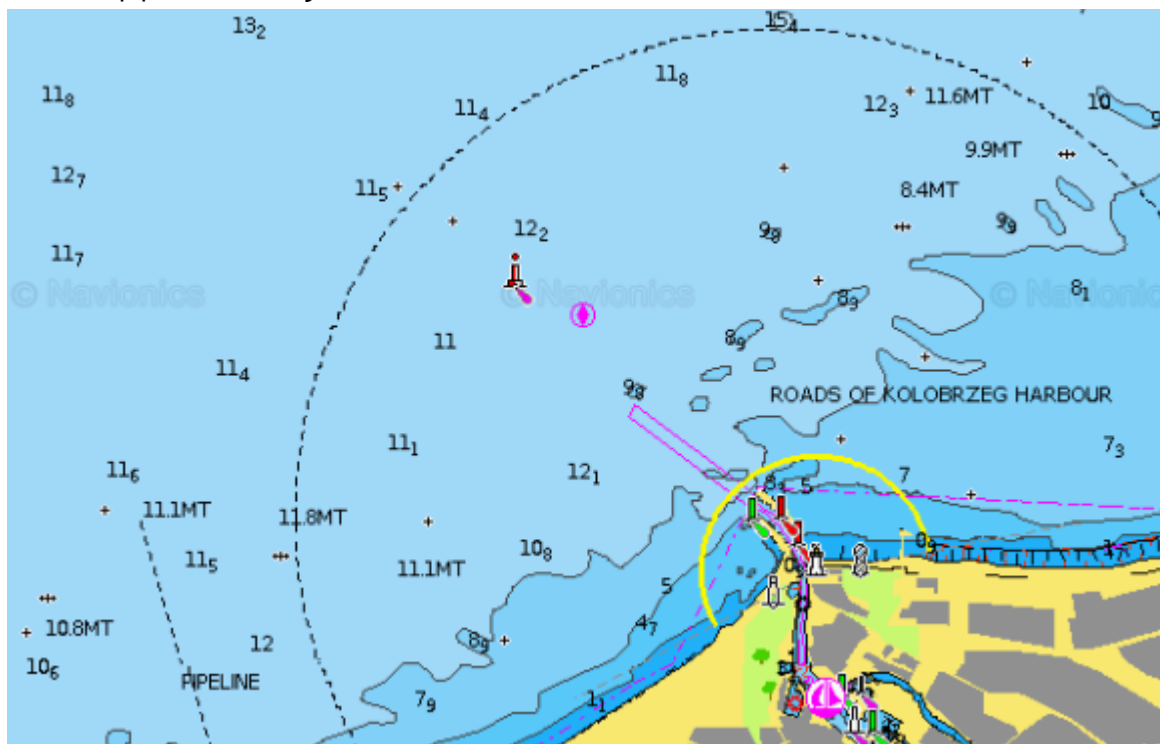
1. "ORWBornholm Blue Ribbon Race" Route A. Start at the yellow buoy KO-4 (approach to the waterway, to the port of Świnoujście), at max. 200 m from the mark. Distance to Nexø approximately 70 Nm. Finish point is located no more than 300 meters from the southern head of the entrance to Nexø port (red color).



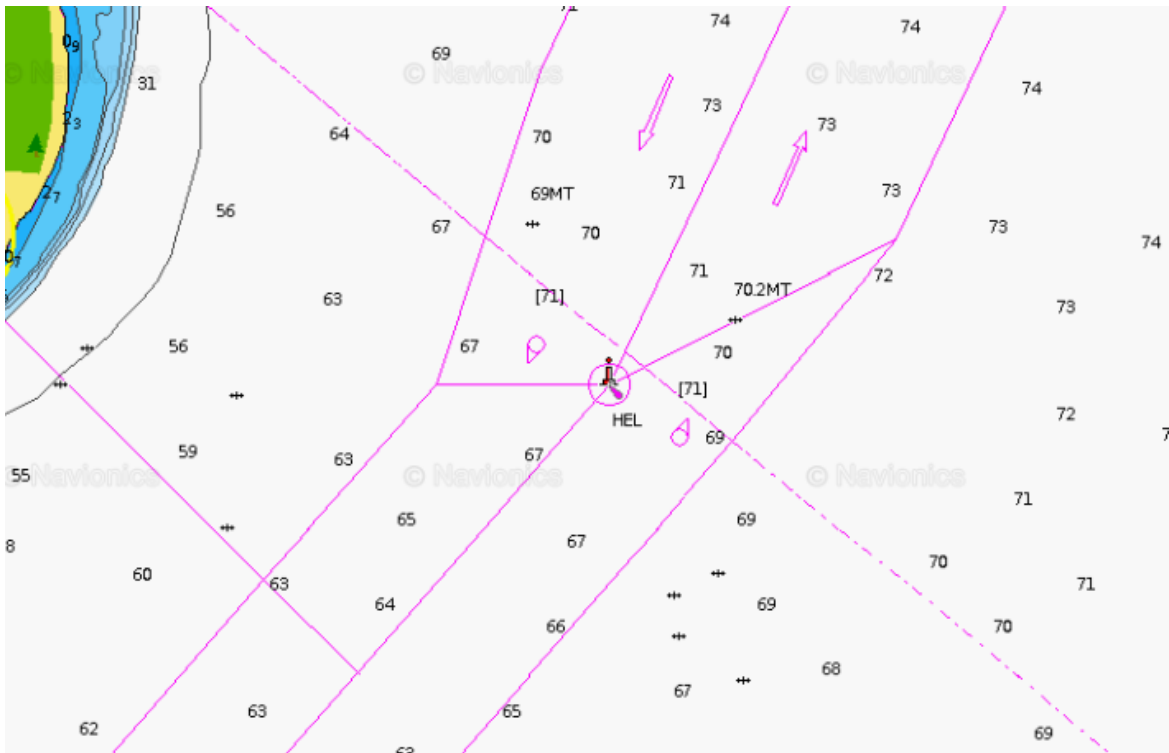
2. „ORWBornholm Blue Ribbon Race" Route B. Start by passing the approach buoy in red and white colors, marked DZI, at max. 300 m from the mark. Distance to Nexø approximately 62 Nm..



3. „ORWBornholm Blue Ribbon Race" Route C. Start at the red and white approach buoy marked KOL, at max. 300 m from the mark. Distance to Nexø approximately 53 Nm.



4. „ORWBornholm Blue Ribbon Race" Route D. Start at the red and white approach buoy marked HEL, at a distance of max. 300 m from the mark. Distance to Nexø approximately 130 Nm.



Race Rules

During the race, there are no restrictions on sail area. The only limitation is the prohibition of using additional propulsion. The rules of safe navigation according to the International Regulations for Preventing Collisions at Sea (IRPCAS) and Fair Play principles apply.

Classification

The Blue Ribbon Race will be for the following classes:

Class I - DH - FC (double-handed and fully-crewed) with LOA < 10 m

Class II - DH - FC (double-handed and fully-crewed) with LOA \geq 10 m

Prizes

The captain of the winning yacht in each class and routes A to D will receive the ORWBornholm Blue Ribbon statuette and a blue shirt. Each crew member will receive a commemorative medal. Additionally, a special prize sponsored by a sponsor is planned. Each winning yacht will also be honored with a blue flag during the stopover in the Nexø port.